



# PRUETT PLACE

---

DARREL PRUETT

256-574-4810

TANYA TALLEY

256-244-4196

CONNIE STEWART

256-599-5165

SCOTTSBORO, AL 35769

# Preliminary Rendering-Front

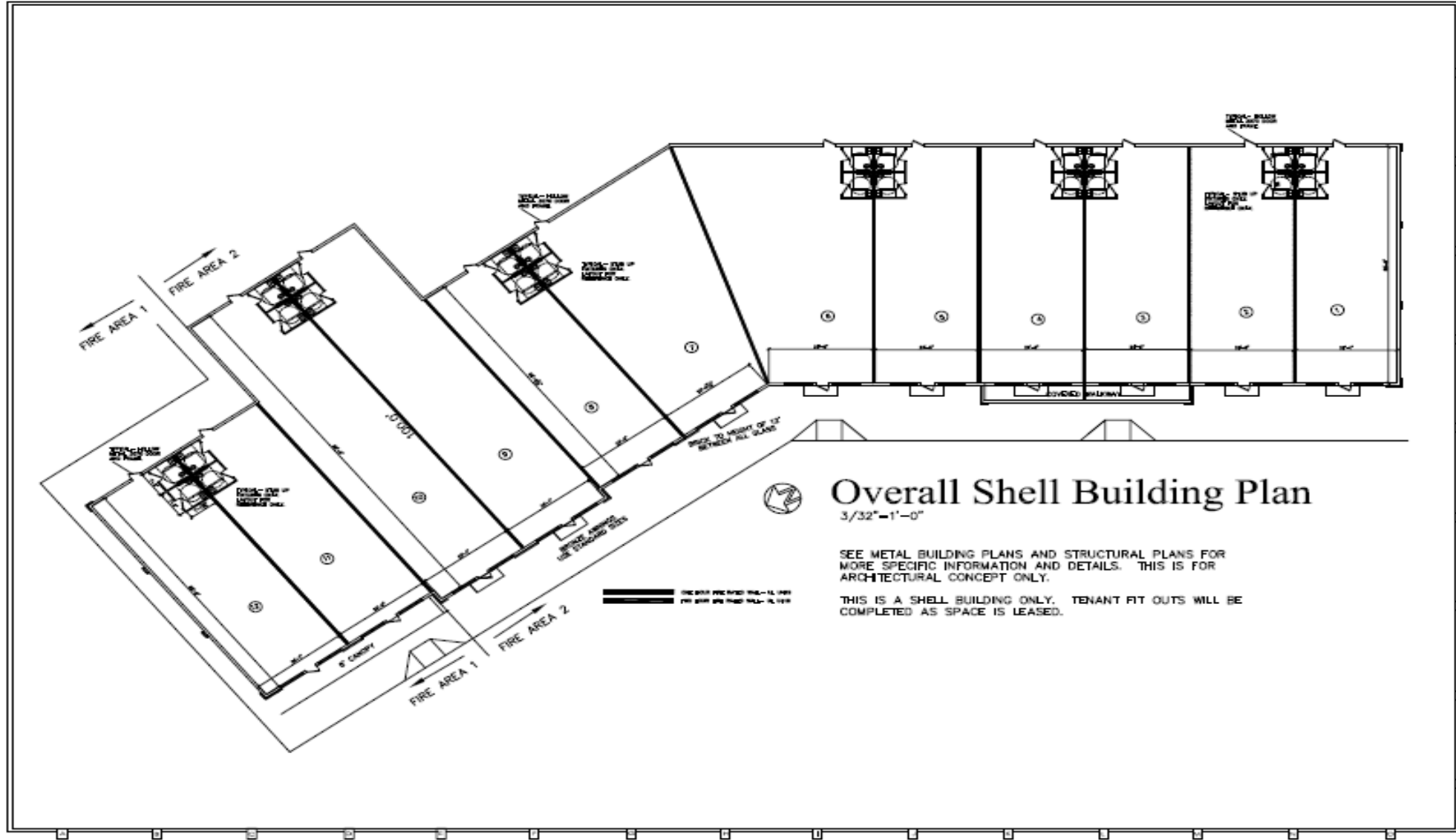


A.B. SMITH III ARCHITECTURE  
 101 WILSON ST. NORTON, AL 36858  
 TEL: 205-398-2800 FAX: 205-398-1000  
 WWW.ABSMITHIII.COM

DATE:	
BY:	
CHECKED BY:	
SCALE:	

PRUITT PLACE  
 SHOPPING CENTER  
 1601 VETERANS DRIVE  
 SCOTTSDALE, AL

DATE: 2/23/16  
 SHEET: A-1



# Overall Shell Building Plan

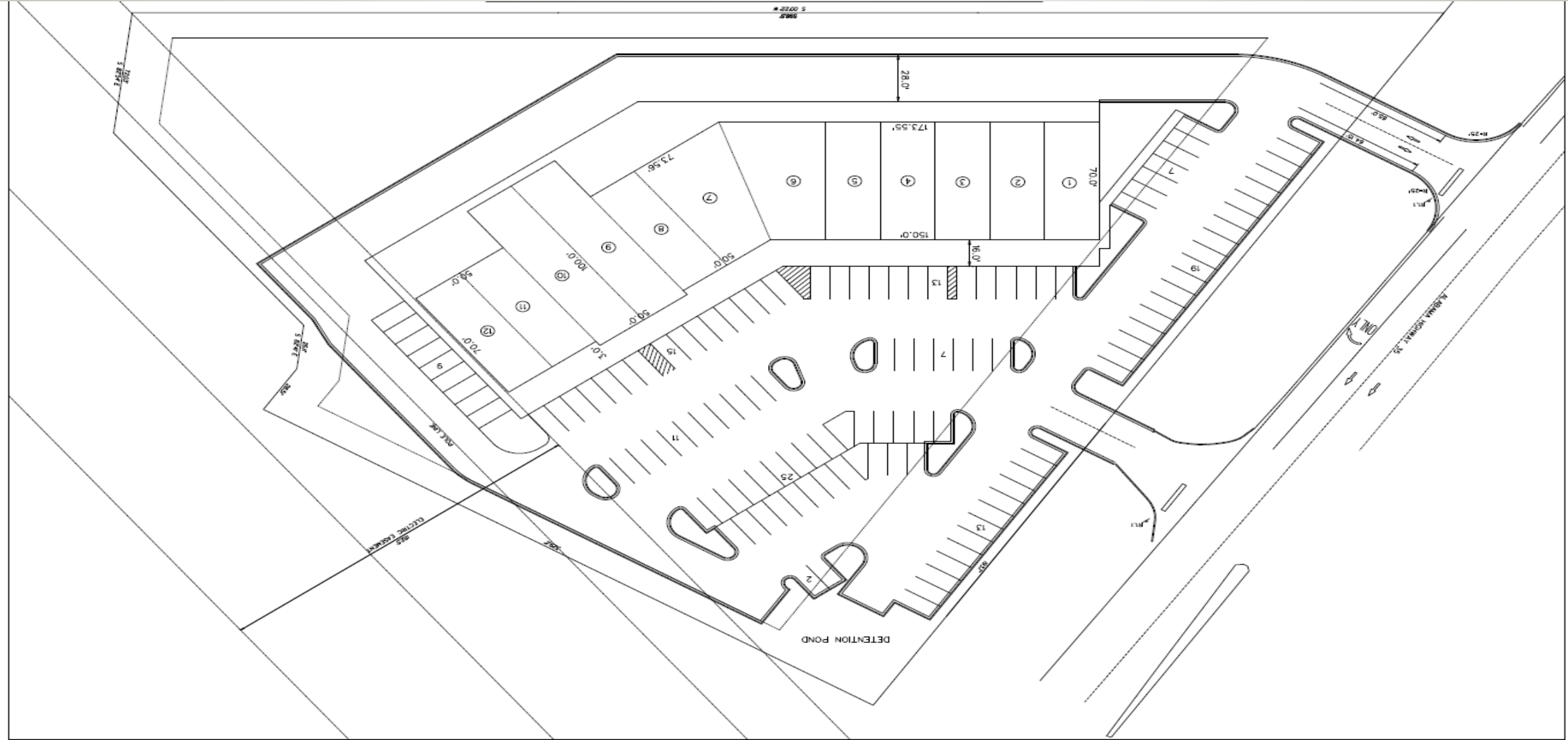
3/32" = 1'-0"

SEE METAL BUILDING PLANS AND STRUCTURAL PLANS FOR MORE SPECIFIC INFORMATION AND DETAILS. THIS IS FOR ARCHITECTURAL CONCEPT ONLY.

THIS IS A SHELL BUILDING ONLY. TENANT FIT OUTS WILL BE COMPLETED AS SPACE IS LEASED.

—— FIRE AREA PER CODE 903-11.001  
 PER 903-11.002 PER 903-11.003

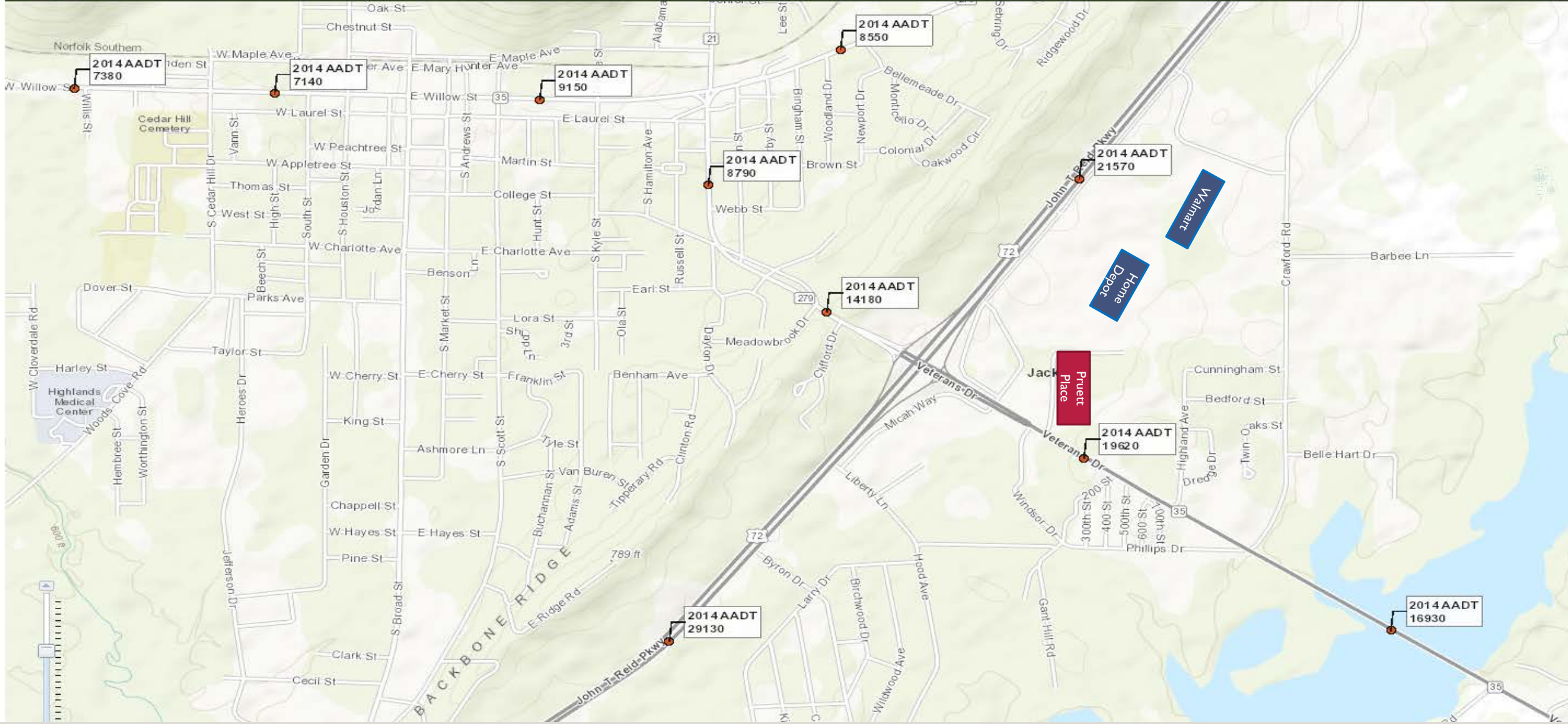
# Site Plan





# Alabama Traffic Data

For contact information, please contact the Alabama Department of Transportation.



## Population

Population estimates, July 1, 2015, (V2015)	52,419
Population estimates base, April 1, 2010, (V2015)	53,226
Population, percent change - April 1, 2010 (estimates base) to July 1, 2015, (V2015)	-1.5%
Population, Census, April 1, 2010	53,227

## Age and Sex

Persons under 5 years, percent, July 1, 2015, (V2015)	5.4%
Persons under 5 years, percent, April 1, 2010	6%
Persons under 18 years, percent, July 1, 2015, (V2015)	21.5%
Persons under 18 years, percent, April 1, 2010	22.5%
Persons 65 years and over, percent, July 1, 2015, (V2015)	19.0%
Persons 65 years and over, percent, April 1, 2010	16.5%
Female persons, percent, July 1, 2015, (V2015)	50.8%
Female persons, percent, April 1, 2010	50.9%

## Race and Hispanic Origin

White alone, percent, July 1, 2015, (V2015)	91.4%
White alone, percent, April 1, 2010	90.8%
Black or African American alone, percent, July 1, 2015, (V2015)	3.6%
Black or African American alone, percent, April 1, 2010	3.3%
American Indian and Alaska Native alone, percent, July 1, 2015, (V2015)	1.6%
American Indian and Alaska Native alone, percent, April 1, 2010	1.4%
Asian alone, percent, July 1, 2015, (V2015)	0.5%
Asian alone, percent, April 1, 2010	0.3%
Native Hawaiian and Other Pacific Islander alone, percent, July 1, 2015, (V2015)	0.1%
Native Hawaiian and Other Pacific Islander alone, percent, April 1, 2010	0.1%
Two or More Races, percent, July 1, 2015, (V2015)	2.7%
Two or More Races, percent, April 1, 2010	2.6%
Hispanic or Latino, percent, July 1, 2015, (V2015)	2.9%
Hispanic or Latino, percent, April 1, 2010	2.5%
White alone, not Hispanic or Latino, percent, July 1, 2015, (V2015)	89.2%
White alone, not Hispanic or Latino, percent, April 1, 2010	90.1%

## Housing

Housing units, July 1, 2015, (V2015)	24,771
Housing units, April 1, 2010	24,786
Owner-occupied housing unit rate, 2010-2014	74.5%
Median value of owner-occupied housing units, 2010-2014	\$93,800
Median selected monthly owner costs -with a mortgage, 2010-2014	\$951
Median selected monthly owner costs -without a mortgage, 2010-2014	\$321
Median gross rent, 2010-2014	\$550

## Families and Living Arrangements

Households, 2010-2014	20,425
Persons per household, 2010-2014	2.56
Living in same house 1 year ago, percent of persons age 1 year+, 2010-2014	91.3%
Language other than English spoken at home, percent of persons age 5 years+, 2010-2014	3.0%

## Education

High school graduate or higher, percent of persons age 25 years+, 2010-2014	75.3%
Bachelor's degree or higher, percent of persons age 25 years+, 2010-2014	12.9%

## Health

With a disability, under age 65 years, percent, 2010-2014	13.4
Persons without health insurance, under age 65 years, percent	15.7%

## Economy

In civilian labor force, total, percent of population age 16 years+, 2010-2014	54.6%
In civilian labor force, female, percent of population age 16 years+, 2010-2014	48.0%
Total accommodation and food services sales, 2012 (\$1,000)	48,995
Total health care and social assistance receipts/revenue, 2012 (\$1,000)	
Total manufacturers shipments, 2012 (\$1,000)	1,540,386
Total merchant wholesaler sales, 2012 (\$1,000)	
Total retail sales, 2012 (\$1,000)	454,888
Total retail sales per capita, 2012	\$8,580

## Transportation

Mean travel time to work (minutes), workers age 16 years+, 2010-2014	25.9
--	------

## Income and Poverty

Median household income (in 2014 dollars), 2010-2014	\$36,874
Per capita income in past 12 months (in 2014 dollars), 2010-2014	\$20,055

## Businesses

Total employer establishments, 2014	859
Total employment, 2014	12,741
Total annual payroll, 2014	396,870
Total employment, percent change, 2013-2014	2.4%
Total nonemployers establishments, 2014	3,046
All firms, 2012	3,637
Men-owned firms, 2012	2,202
Women-owned firms, 2012	1,004
Minority-owned firms, 2012	283
Nonminority-owned firms, 2012	3,239
Veteran-owned firms, 2012	404
Nonveteran-owned firms, 2012	3,016

## Lease Terms

3 Year Lease Term

\$14 per sq. white box

1.50 common fee

1750 Sq. feet minimum

Build out financed for a lease term agreement based on balance.

# Google is proud to be building a data center in Jackson County.



JACKSON COUNTY, Ala. (WHNT) - Governor Robert Bentley joined state and local officials from the Jackson County community and officials from the Tennessee Valley Authority to announce plans for Google to build a \$600 million dollar data center in the Stevenson Bridgeport area. Bentley says it will bring 75 to 100 jobs to Jackson County.

It was announced Wednesday that Google has chosen TVA's Widows Creek, a soon-to-be retired coal plant, to build its newest data center – the 14th across the globe. "We're really excited to have them. It's really the first large data center that we have in the state of Alabama," Governor Bentley says.

"This is a big day for TVA," Bill Johnson said. "The partnership between the Alabama Department of Commerce, Jackson County Economic Development Authority, and TVA helped secure an innovative, global technology company to the Valley."

The coal plant, which started operation in 1952, will be in operation for a few more months, a TVA spokesperson said. "This facility has served TVA well since it started operating in 1952; so the decision to close Widows Creek was not easy, and is especially hard on our employees and their families. We are thankful for this exciting new opportunity for jobs in northern Alabama," Johnson said. Google will invest \$600 million in this project and will bring approximately 100 jobs to northern Alabama, using part of the coal plant site.

Google released [details about the data center on its official blog](#) saying: "Every time you check your Gmail, search on Google for a nearby restaurant, or watch a YouTube video, a server whirs to life in one of our data centers. Data centers are the engines of the Internet, bringing the power of the web to millions of people around the world. And as millions more people come online, our data centers are growing, too.

We've recently expanded our data centers in Iowa, Georgia, Singapore and Belgium. And today we're announcing a new data center in Alabama—our 14th site globally.

This time, we're doing something we've never done before: we'll be building on the grounds of the Widows Creek coal power plant in Jackson County, which has been scheduled for shutdown. Data centers need a lot of infrastructure to run 24/7, and there's a lot of potential in redeveloping large industrial sites like former coal power plants. Decades of investment shouldn't go to waste just because a site has closed; we can repurpose existing electric and other infrastructure to make sure our data centers are reliably serving our users around the world.

At Widows Creek, we can use the plants' many electric transmission lines to bring in lots of renewable energy to power our new data center. Thanks to an arrangement with Tennessee Valley Authority, our electric utility, we'll be able to scout new renewable energy projects and work with TVA to bring the power onto their electrical grid. Ultimately, this contributes to our goal of being powered by 100% renewable energy.

In 2010, we were one of the first companies outside of the utility industry to buy large amounts of renewable energy. Since then, we've become the largest corporate renewable energy purchaser in the world (in fact we've bought the equivalent of over 1.5 percent of the installed wind power capacity in the U.S.). We're glad to see this trend is catching on among other companies. Of course, the cleanest energy is the energy you don't use. Our Alabama data center will incorporate our state-of-the-art energy efficiency technologies. We've built our own super-efficient servers, invented more efficient ways to cool our data centers, and even used advanced machine learning to squeeze more out of every watt of power we consume. Compared to five years ago, we now get 3.5 times the computing power out of the same amount of energy.

Since the 1960s, Widows Creek has generated power for the region—now the site will be used to power Internet services and bring information to people around the world. We expect to begin construction early next year and look forward to bringing a Google data center to Alabama."

Governor Bentley says officials have been working on this deal for months and he's extremely happy with the company's presence in Alabama. The governor praised TVA for its help in facilitating this deal.